

# RIS3 support in Lagging Regions

Iasi, 7 June 2016



Project team: Mark Boden, Karel  
Haegeman, Elisabetta Marinelli, Patrice  
dos Santos, Susana Valero

[www.jrc.ec.europa.eu](http://www.jrc.ec.europa.eu)

*Serving society*

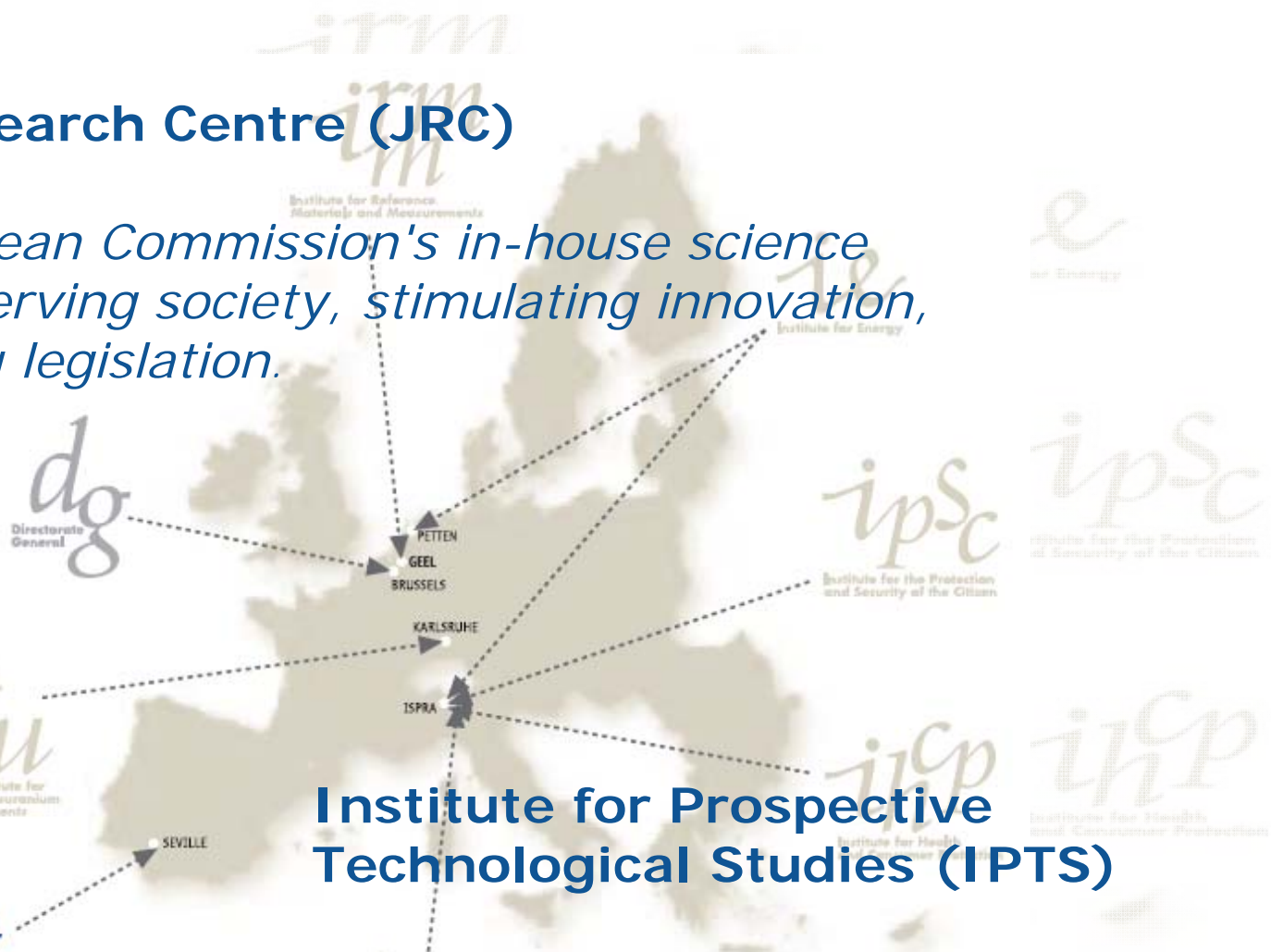
*Stimulating innovation*

*Supporting legislation*



# Joint Research Centre (JRC)

*The European Commission's in-house science service. Serving society, stimulating innovation, supporting legislation.*



## Institute for Prospective Technological Studies (IPTTS)

# Activities of the S3 Platform

**TARGETED SUPPORT**

**Synergies  
ESIF-H2020**

**The RIS3  
Guide & the Digital  
Agenda Toolbox; S3  
policy briefs**

**Trans-national  
learning and Peer  
Review**

**Thematic focus on  
actors, process,  
common features**

**RIS3 assessment**

**Interactive web  
, S3 Newsletter  
and Website**

**Value chains and  
alignment of  
innovation  
roadmaps**



## **S3 in Lagging Regions: Project Aims**

**To support the refinement and implementation of the RIS3 of selected EU regions**

**To generate lessons and a model for other regions**

**To serve as a test-bed for theories on Smart Specialisation – understanding of RIS3**

# Sluggish Regions: Policy issues

**Slow and limited growth** – despite levels of investment – beyond general sluggish growth in Europe post-2008

**Low growth regions** - GDP/capita in PPS below the EU average and that did not converge to EU average post-crisis (Greece, Italy, Spain, Portugal)

**Less developed regions** - GDP/capita in PPS <50% of EU average (Bulgaria, Hungary, Poland, Romania)

**Lack of understanding** of reasons for this → lack of effective actions to identify, understand, address issues

# Impacts: Eastern Macedonia and Thrace

European  
Commission

## Trust building and commitment

- Willingness/openness to collaborate
- Increased trust in the "quadruple helix"
- Approach adaptable to other regions

## Enhanced understanding of RIS3

- Focus on the process and the ideas emerging
- Need to align regional strengths, international trends and opportunities

## Participatory capacity building

- Increased participation of stakeholders in policy activities (EDP focus groups, working groups, online consultations)

## Identifying Challenges

- Legal and administrative
- Capacities and experiences

## Other

- Momentum created and sustained
- Sense of collaboration between actors

# EP PA1: Support for growth and governance in lagging regions

- Building on positive outcomes of RIS3 in REMTh
- Support for activities in 8 lagging regions (4 low-growth & 4 underdeveloped regions)
- Stakeholder events, mutual learning/peer reviews, support for implementation of RIS3
- Developing cross-cutting approach to key issues regarding growth and governance
- Refinement of the RIS3 model
- Further development of practical support for regions across Europe

## EP PA2: Competitive advantage and potential for smart specialisation at regional level in Romania

- To ensure coherent, coordinated and sustainable approach, to secure, develop and enhance engagement of relevant stakeholders
- To create linkages between regional and national RIS3 and to support their implementation
- Focus regions where no RIS3 has been developed or implemented and/or where RIS3 needs to be improved
- Identify, assess, and support exploitation of economic and innovation potential in selected regions
  - based on entrepreneurial discovery process
  - governance structure and framework for continuous collaboration
  - enhanced cooperation and coordination at all levels



# Objectives

- appropriate and **specific support** to the implementation of RIS3 and related activities in selected lagging regions
- develop and implement **horizontal approach to key issues** in growth and governance of lagging regions
- improve **understanding of slow and limited growth** in EU regions and links to macro-economic framework conditions
- RIS3 - an entry point to **understanding broader structural problems** (e.g. in RDI, education, business environment and governance) - links with the 'lagging regions initiative'
- contribute to **advancing relevant theory** on (implementation of) smart specialisation by codifying hands-on experiences
- **develop and disseminate lessons** for other EU regions

# Implementation

- **Partnership:** JRC, DG REGIO, national and subnational authorities of each region, regional stakeholders from business, research and civil society, and other EC DGs (GROW, AGRI, CNECT, COMP etc.)
- **Involvement of national government** an essential element
- **Flexibility** to tailor the approach to the needs and problems identified by actors involved
- **Transnational dimension** - to identify and share common challenges and solutions
- Optimal use of **synergies** with other ongoing activities - S2E, Lagging Regions initiative, Vanguard Initiative, S3P, as well as wider research and innovation initiatives in Europe

# Work Packages

- **National/Regional Profiling** - stocktaking and assessment of state of RIS3 implementation in selected countries/regions
- **RIS3 implementation and refinement in Romanian regions** - reinforcement of linkages between national and regional RIS3 and support to development of EDP
- **Specific support activities** - undertaken in selected regions
- **Horizontal support and peer learning** - addressing common issues and with wider relevance
- **Analysis, tool development and policy recommendations**
- **Coordination, cooperation, and communication**

# Bottom Up Dynamic

## Business idea as main driver

### Business idea

E.g. use of wine-making residues

EDP focus group

### Idea decomposed

Research and innovation components and fundability

Project Development Lab 1 (PDL 1)

### Idea refined

Partners, business and research aspects, roadmap, funding sources

Online consultation and PDL 2

## Bottlenecks for implementation

Peer review  
Board of critical friends

Analysis of role of KETs

Mapping international R&I collaborations

Working groups  
Mobility & Governance

RDI funding guide and case studies

Technical meetings regional/national/EU

State aid issues

Avoid double funding between national/regional calls

Sustainability/viability

Role for KETs

Need for champions/leaders

Address training needs

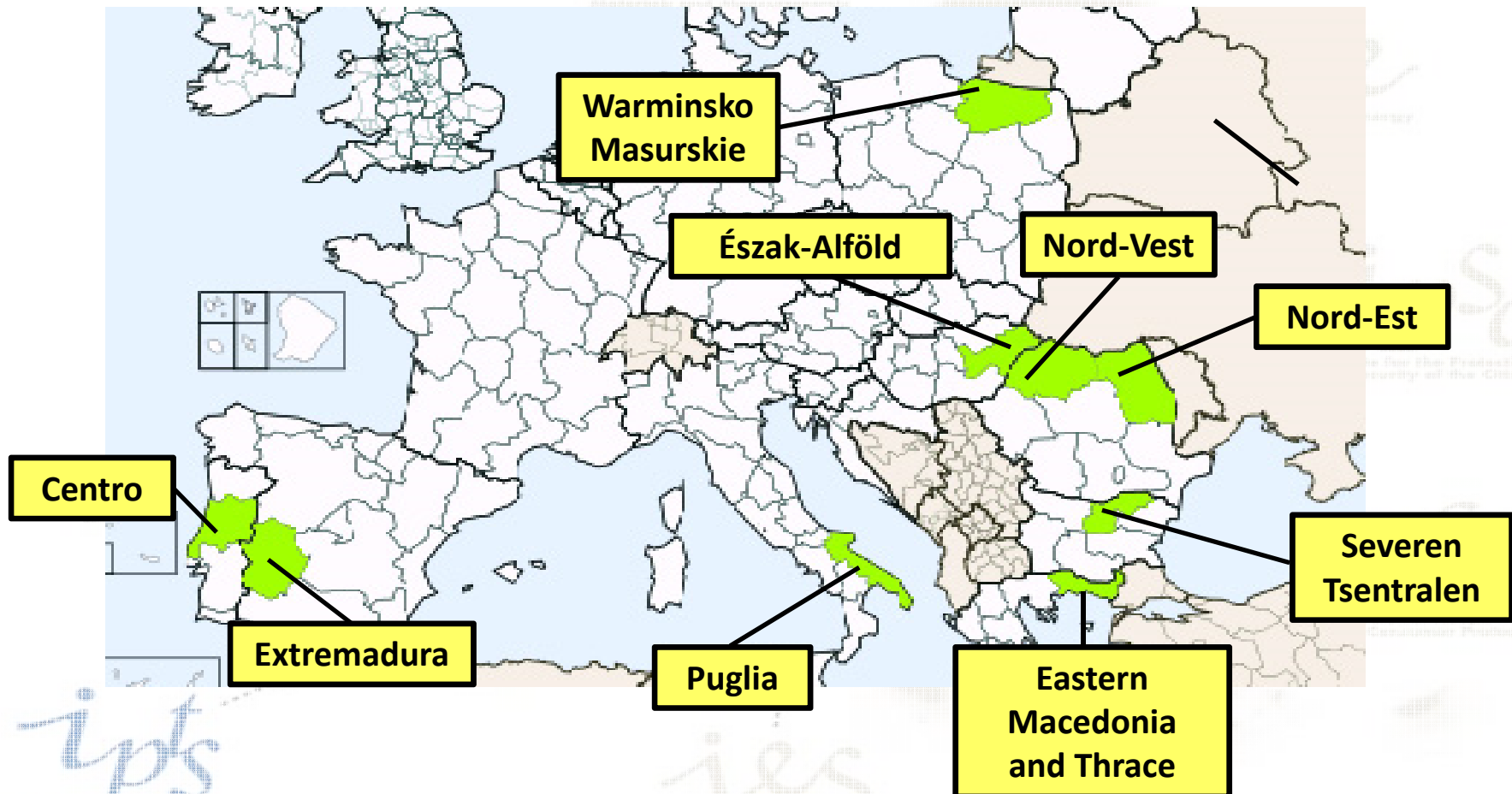
International scope

# Toolbox

Objectives	Tools
Idea generation, trust building and support cooperation	EDP focus group methodology
Open up to wider (online) communities	Online stakeholder engagement
Address brain drain, build skills	Mobility Working Group
Increase coordination between national and regional levels	Methodology Project Development Lab 1
Widen funding sources to draw on for idea implementation	Methodology Project Development Lab 2
	Online RDI Funding Guide
	Case descriptions
Optimise RIS3 governance structure	Governance working group
Support ongoing stakeholder engagement	Stakeholder round table discussions
Identification of barriers and possible solutions	Tailored peer review events
Mutual learning	Board of critical friends
Support international cooperation	Collaboration spotting tool

# Support to RIS3 implementation in Lagging Regions

Focused on 9 regions in Eastern and Southern Europe: selection of regions



# REGIONS

- **Bulgaria** - Severen Tsentralen
- **Greece** – Eastern Macedonia and Thrace
- **Hungary** - Észak-Alföld (city focus - Debrecen)
- **Italy** – Puglia
- **Poland** - Warminsko Masurskie
- **Portugal** - Centro
- **Romania** - Nord-Est and Nord-Vest
- **Spain** – Extremadura

# Horizontal issues (i)

- **Governance** - Working Group on Governance
  - long-term sustainability of the EDP process
  - relationship between national and regional levels
  - synergies between structural funds and other resources
- **Transnational cooperation** – essential to RIS3
  - Potential transnational collaboration
  - Cross-border cooperation within EU and with neighbourhood countries
  - Thematic cooperation across EU (Value chains/KICs/...)
  - Methodological cooperation/mutual learning



## Horizontal issues (ii)

**Implementation of RIS3** –critical issues for sustainable RIS3 implementation:

- State Aid rules
- Sustaining EDP
- Instruments beyond the ROP (synergies between ERDF and H2020, but also with other (EU) funding opportunities)
- Appropriate monitoring and evaluation systems
- Components of the R&I system and design of the policy mix - Role of universities, RTOs, and research-active firms
- Outward-looking orientation



European  
Commission

## Project website

<http://s3platform.jrc.ec.europa.eu>

**Thank you!**

